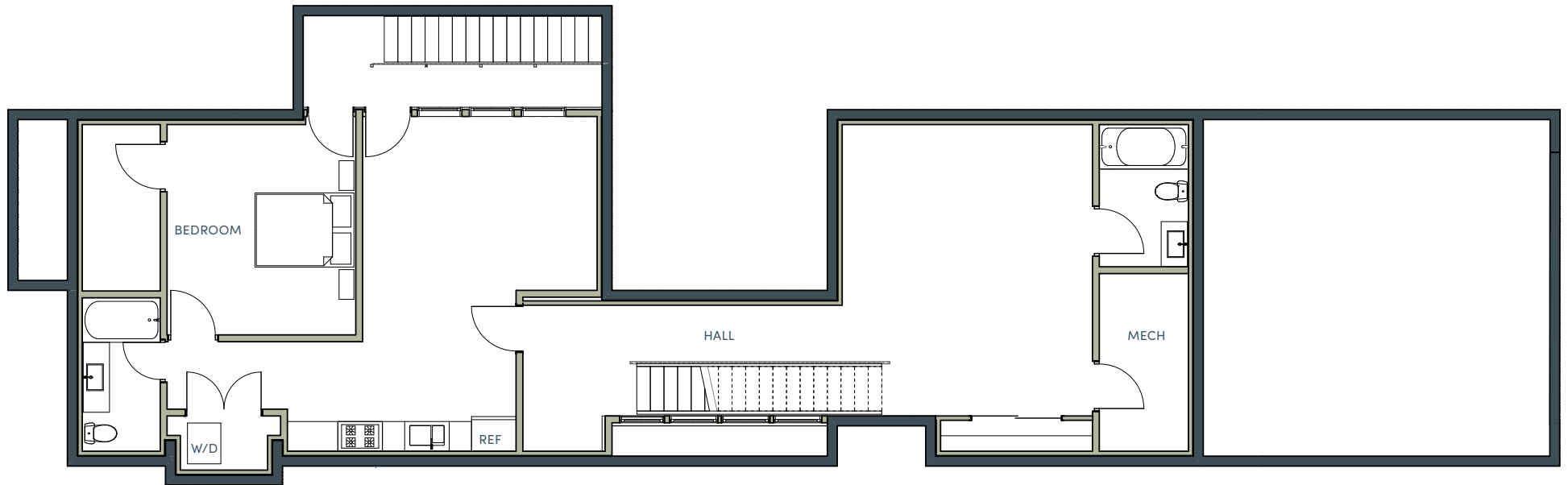


565 E HANSEN RESIDENCE - BASEMENT LEVEL

Main Residence: 3 Bedrooms, 3.5 Bath, approx. 2,845 SF

Accessory Residence (basement level): 1 Bedroom, 1 Bath, approx. 1,572 SF



Developer: The Jackson Home Company

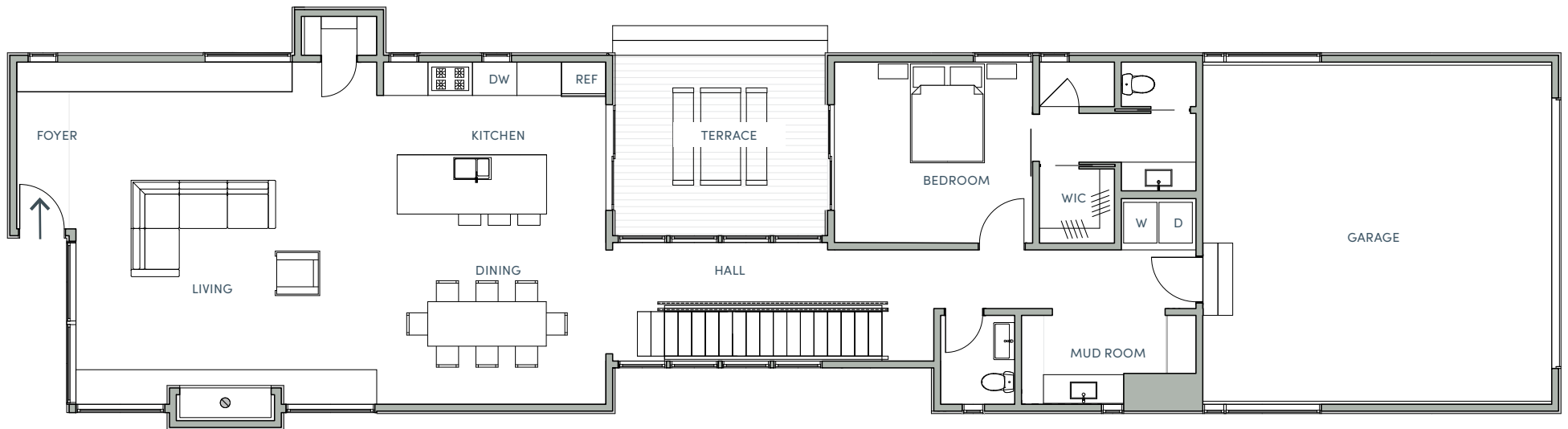
Exclusive Sales Representatives: Jake Kilgrow | Associate Broker c. 307.413.2822 & Betsy Bingle | Associate Broker c. 307.413.8090
Jackson Hole Sotheby's International Real Estate

All drawings are conceptual renderings and the Developer expressly reserves the right to make modifications. The unit layouts, square footage, and dimensions are approximate. Plans, specification, and materials may vary due to construction, field conditions, requirements, and availabilities. Units will not be offered furnished. Furniture layouts shown are for concept only. No representation or warranty is made that a unit owner will be able to implement the furniture layout shown. Prospective purchasers are advised to review the complete terms of the offering plan for further detail as to type, quality, and quantity of materials, appliances, equipment, and fixtures to be included in the units. The complete offering terms are in an offering plan available from Developer.

565 E HANSEN RESIDENCE - MAIN LEVEL

Main Residence: 3 Bedrooms, 3.5 Bath, approx. 2,845 SF

Accessory Residence (basement level): 1 Bedroom, 1 Bath, approx. 1,572 SF



Developer: The Jackson Home Company

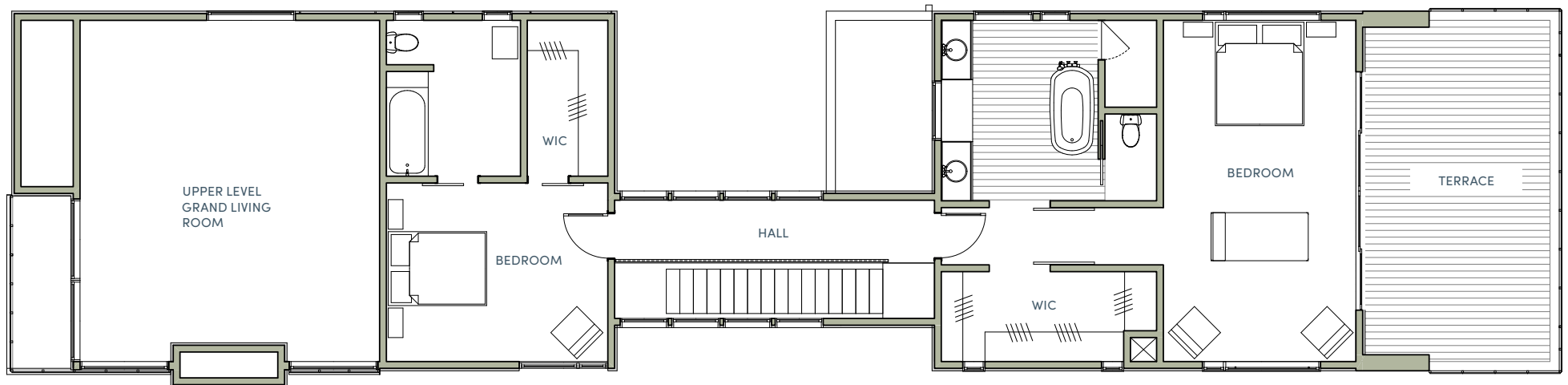
Exclusive Sales Representatives: Jake Kilgrow | Associate Broker c. 307.413.2822 & Betsy Bingle | Associate Broker c. 307.413.8090
Jackson Hole Sotheby's International Real Estate

All drawings are conceptual renderings and the Developer expressly reserves the right to make modifications. The unit layouts, square footage, and dimensions are approximate. Plans, specification, and materials may vary due to construction, field conditions, requirements, and availabilities. Units will not be offered furnished. Furniture layouts shown are for concept only. No representation or warranty is made that a unit owner will be able to implement the furniture layout shown. Prospective purchasers are advised to review the complete terms of the offering plan for further detail as to type, quality, and quantity of materials, appliances, equipment, and fixtures to be included in the units. The complete offering terms are in an offering plan available from Developer.

565 E HANSEN RESIDENCE - UPPER LEVEL

Main Residence: 3 Bedrooms, 3.5 Bath, approx. 2,845 SF

Accessory Residence (basement level): 1 Bedroom, 1 Bath, approx. 1,572 SF



Developer: The Jackson Home Company

Exclusive Sales Representatives: Jake Kilgrow | Associate Broker c. 307.413.2822 & Betsy Bingle | Associate Broker c. 307.413.8090
Jackson Hole Sotheby's International Real Estate

All drawings are conceptual renderings and the Developer expressly reserves the right to make modifications. The unit layouts, square footage, and dimensions are approximate. Plans, specification, and materials may vary due to construction, field conditions, requirements, and availabilities. Units will not be offered furnished. Furniture layouts shown are for concept only. No representation or warranty is made that a unit owner will be able to implement the furniture layout shown. Prospective purchasers are advised to review the complete terms of the offering plan for further detail as to type, quality, and quantity of materials, appliances, equipment, and fixtures to be included in the units. The complete offering terms are in an offering plan available from Developer.